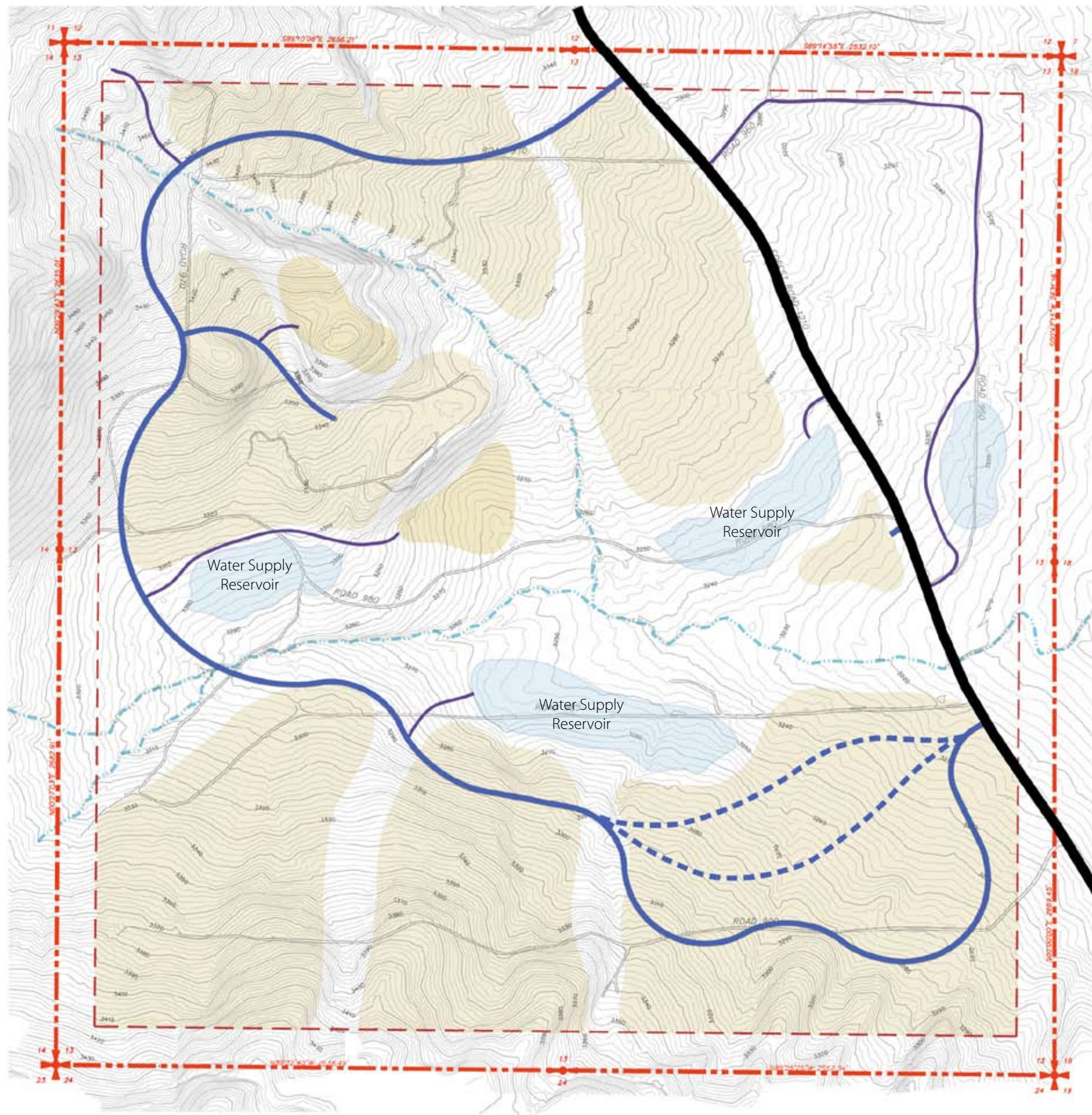


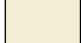





DRAFT
01/2009



LEGEND

-  **Forest Road 1210**
66' Public Use ROW across private land
Paved, 28' wide
-  **Primary Road**
Private, 50' ROW
Paved, 22' wide
-  **Primary Road Alternatives**
-  **Utility Access Roads**
-  **Existing Logging Roads**
-  **Development Area**
-  **Property Line**
-  **200' Voluntary Fire Setback**
-  **Seasonal Drainageway**
-  **10' Contour**
-  **2' Contour**

NOTES:

- Secondary roads within Development Areas will be determined through review of land division and site plan reviews.
- Existing logging roads may be used for interim fire egress with each phase.