



1. Several former logging roads traverse the site.



2. The site has been significantly logged over the years, leaving a distinctive boundary to the property.



3. The NE corner of the site is gently sloping and features a ponderosa pine plantation with large clearings.

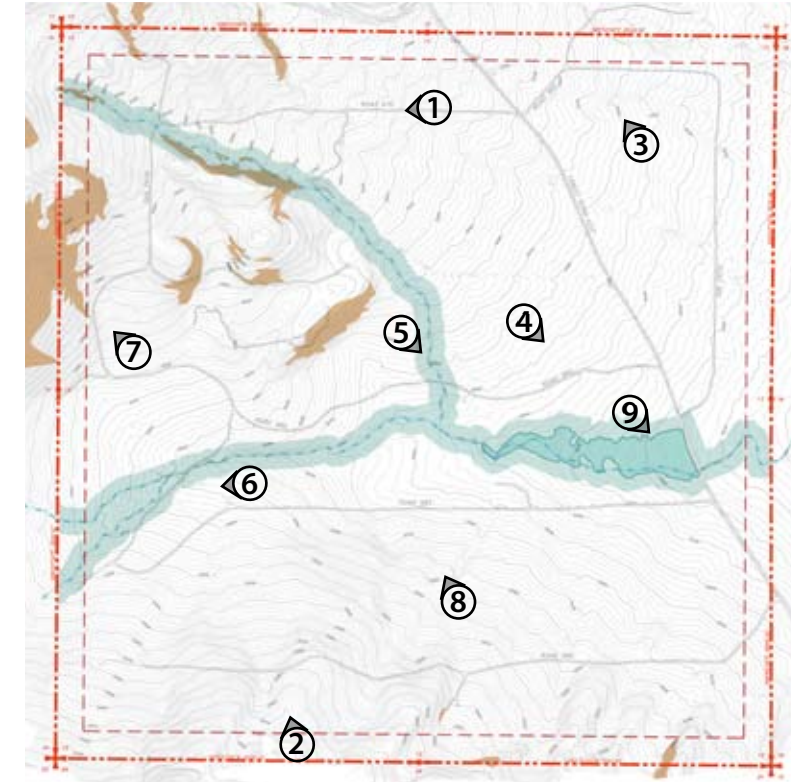


Photo Key



4. The site has been completely logged in the past and some areas of the site were replanted for commercial timber.



5. The site features two seasonal drainages, which are dry much of the year.



6. Portions of the seasonal drainages have been degraded and incised, providing opportunities for restoration.



7. Upland open slopes of the site feature low shrubs with a distinct linear property edge.



8. Some taller tree stands remain from previous harvests.



9. The seasonal drainage through the site joins a potential wetland west of FR 1210 in the center of the site.

DRAFT
01/2009

4	SITE CHARACTER
Tentative Destination Resort Master Plan Application Jefferson County, OR January, 2009	
	