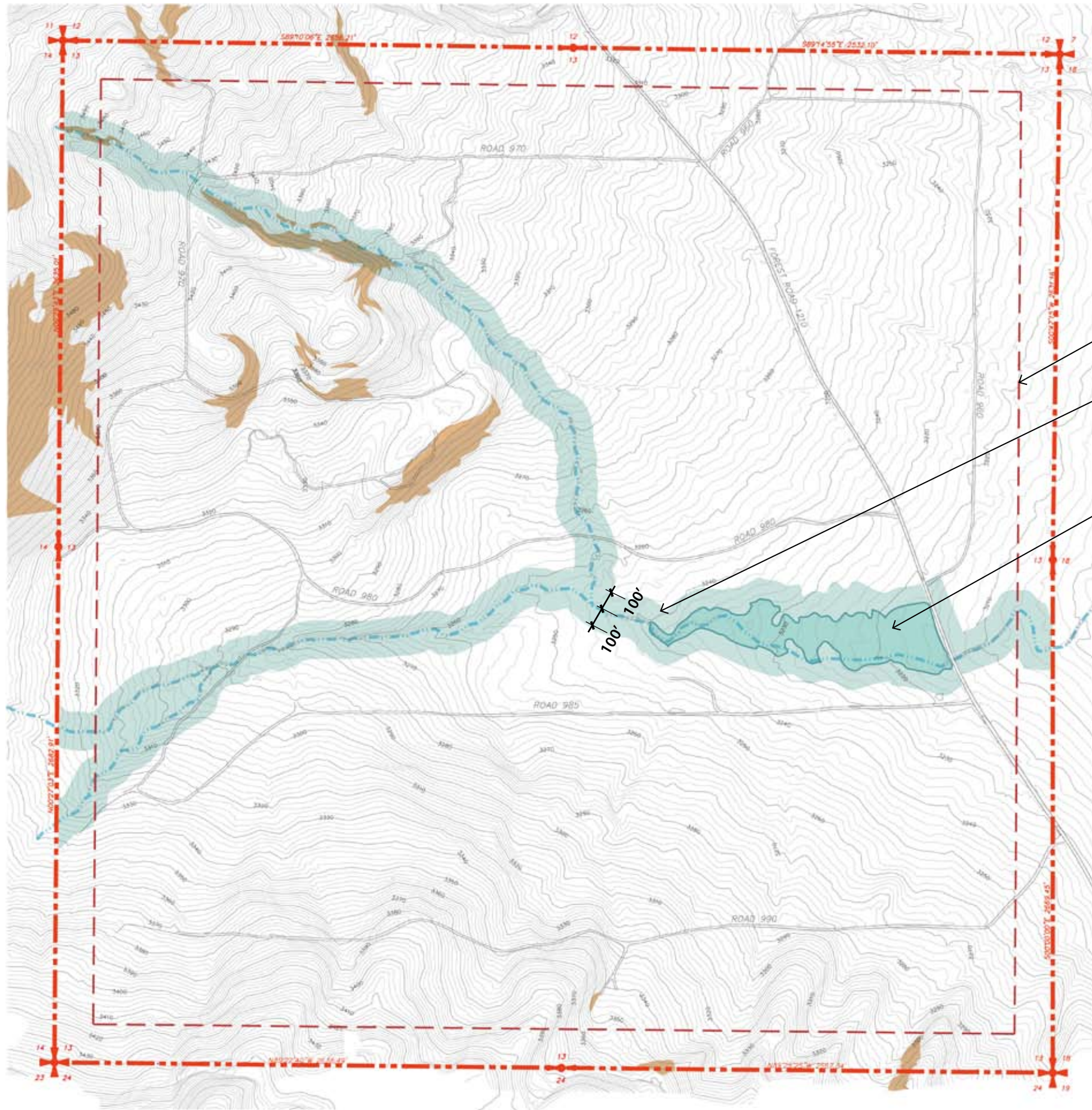


DRAFT
01/2009



200' Voluntary Fire Setback
100' Minimum Riparian Setback (each side of seasonal drainage and wetland)
Potential Wetland

LEGEND

- 100' Min. Riparian Vegetation Setback
- +25% Slopes
- Property Line
- 200' Voluntary Fire Setback
- Seasonal Drainageway
- Potential Wetland*
- 10' Contour
- 2' Contour

*NOTE: Wetland boundary to be delineated in Spring 2009.

Metolian Legal Description:

Township 13 South
Range 8 East
Section 13
Tax Lot 13-08-00-200

5 **BASE MAP**

Tentative Destination Resort Master Plan Application
Jefferson County, OR January, 2009

0 150 300 600ft

METOLIAN